

**PACKED WITH
SMARTNESS**

STAGE



35/40/45D/50DN-9VB

600 mm load centre

40/45D/50DN-9VC

500 mm load centre



ECONOMIC ENGINE
(-33% FUEL
CONSUMPTION)



**INTEGRATED
HYUNDAI
POWERTRAIN**



**LOAD SENSING
PISTON PUMP
(REXROTH)**



**FULL
CONTROL
CLUSTER**



**BEST
STANDARD
WARRANTY**

STAGE V AND BEYOND

Hyundai's new 9VB/VC Series is a smart generation of material handling diesel forklifts that comply with the European Stage V emission levels. But it goes much further than that!

In our mission, 'Moving you Further', Hyundai's engineers aimed for a **groundbreaking level of customer satisfaction** with **maximum performance** and **productivity**, higher **driver comfort**, better **safety** and **improved uptime management**.

Our new 9VB/VC forklifts feature a robust exterior design and are packed with performance-enhancing features that open up a world of new possibilities to tackle all the challenges you face in your logistics business.



PACKED WITH SMARTNESS

Productivity & Efficiency

POWERFUL AND FUEL-EFFICIENT TO REDUCE TCO (TOTAL COST OF OWNERSHIP)

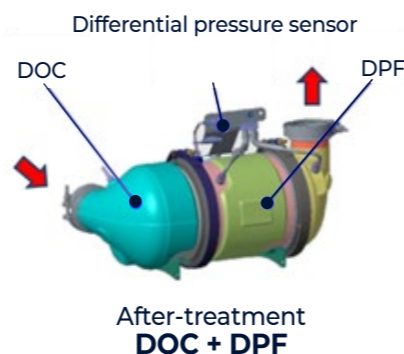
The Hyundai engineers have left no stone unturned in their efforts to save you costs and improve your productivity. The Hyundai legacy of reliable technology continues with an optimised engine and powertrain, developed completely in-house in order to deliver unprecedented efficiency and boost your profits.

Unparalleled fuel efficiency NEW

V **STAGE** The 9VB/VC series is equipped with a powerful 2.9L HMC D4CC diesel engine that produces 55KW while complying with European Stage V environmental regulations. It also achieves **impressive cost savings** by delivering excellent performance with low fuel consumption rates.



- Featuring the optimal displacement for a forklift, the HMC D4CC engine comprises an electronic EGR valve, a common rail, Variable Geometry turbocharging (VGR) with an excellent boosting effect and an after-treatment (DOC + DPF) device.
- The DPF regeneration works automatically.
- A parked regeneration can be activated manually at any time and monitored on the cluster.
- The driver can use a switch to prevent the regeneration process (hot exhaust gases) for working in an area with a potential risk of fire.



Fuel efficiency **33%** ↑

Work-flow **4%** ↑

Rexroth load-sensing piston pump NEW

The engine is combined with a Rexroth variable load-sensing piston pump in conjunction with a new MCV (mechanical or fingertip) from Buchholz. This hydraulic system, based on demand of flow, reduces the power take-off from the engine while driving and therefore the fuel consumption. Due to a higher pump-output, the working speed of all hydraulic functions has been increased. This results in higher productivity with lower costs as shown below.

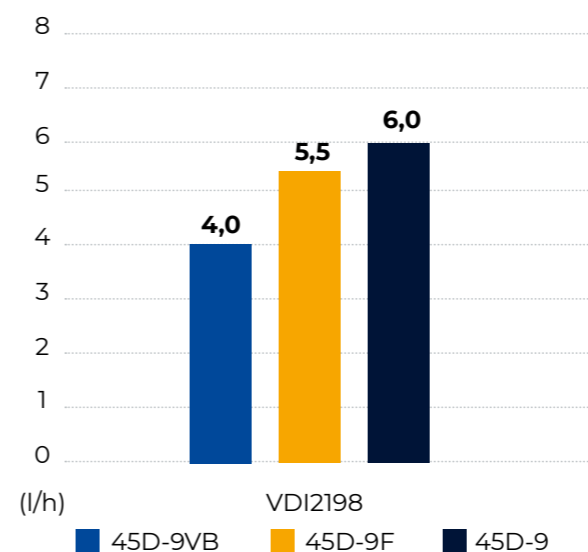


Variable Piston Pump



Load sensing MCV

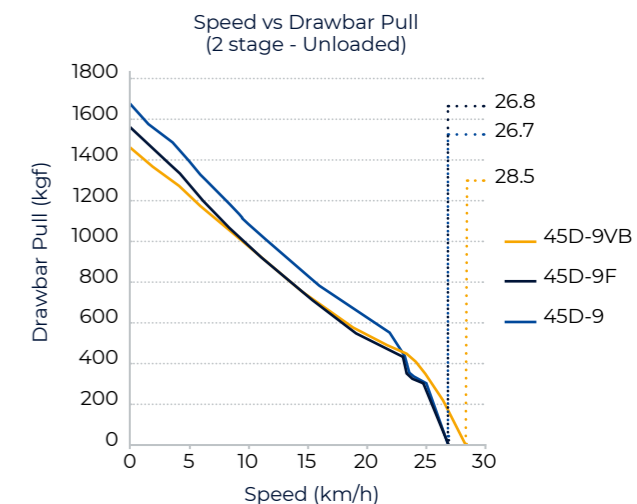
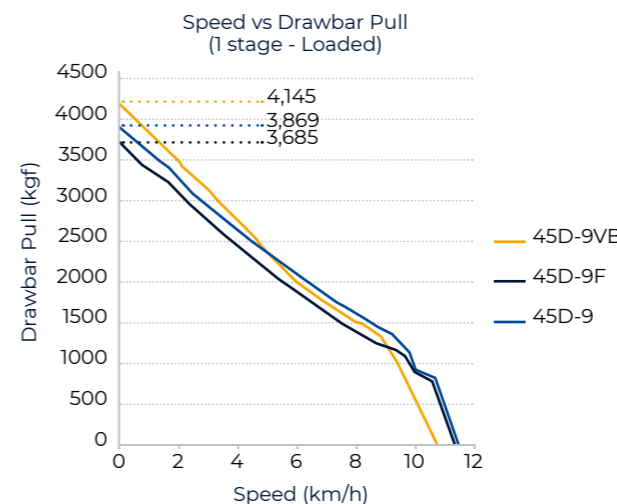
Fuel consumption



Based on VDI2198		81%	100%	109%
Hydraulic System		Load Sensing	Open Centre	Open Centre
ENGINE	Manufacturer	HMC	KUBOTA	Cummins
	Model	D4CC	V3800-TIE4	QSF-3.8
	Emission Regulation	Stage 5	Tier-4 Final	Tier-4 Final
	Rated Power (ps/rpm)	74/2,200	75.3/2,200	102/2,200
	MAX Torque (kg-m/rpm)	34.5/1,500	31.6/1,500	42.3/1,600
	Displacement (cc)	2,891	3,769	3,726

Performance

With **38% less engine power** than the previous high-power version, the new 35-50DN-9VB/VC range achieves a **higher max. speed and drawbar pull**.



Productivity & Efficiency

A LEGACY OF EXCELLENCE: HYUNDAI-DEVELOPED POWERTRAIN

NEW The transmission and drive axle are developed entirely by Hyundai Core Motion for enhanced durability and productivity.

- The clutch pack boosts power transmission capability by 25% and increases T/M oil capacity for better efficiency in high-load working conditions.



- This new transmission features a 2-speed forward automatic gearshift function.
- The gearshift is controlled by the Machine Control Unit (MCU) and is **adjustable in the cluster**.
- The reverse gear is the single-speed type.



NEW The wheelbase has been increased for more stability and safety 30mm for the 35D-9VB-40DN-9VB/VC and by 100mm for the 45-50DN-9VB/VC.

FULL DIAGNOSTICS FOR SMOOTH OPERATIONS AND REDUCED COSTS

- **NEW** The 9VB/VC Series features an enhanced instrument cluster with an easy-to-use, full colour display, enabling a full set-up, diagnostics and maintenance follow-up. More features like the **DCSR system (prevents high-speed directional change)** are available for activation. The DCSR system reduces tyre wear and protects the transmission in order to reduce operating and servicing costs.



- **NEW** The drive axle is equipped with a **planetary reducing gear** offering resistance to torque changes. The sump capacity has been increased by 10% for better performance and durability of the wet disc brakes. Thanks to its enhanced durability and long service intervals, the wet disc brake also **reduces maintenance costs and downtime**.



Operator Comfort

OUTSTANDING ERGONOMICS FOR PRODUCTIVITY AND OPERATING PLEASURE

The cabin is designed to provide every operator with a comfortable working environment that boosts productivity and reduces fatigue, even in tough working conditions. The most important controls are positioned within easy reach and a range of options helps you to tailor the cabin to your needs.



The new engine and load-sensing hydraulic system result in **lower noise and vibrations**, significantly improving operator comfort and productivity.

Vibrations
39% ↓

Cabin noise
63% ↓

"I'm really impressed by how smooth and quiet it is. It's a completely different driving experience!"

Better visibility and cabin comfort

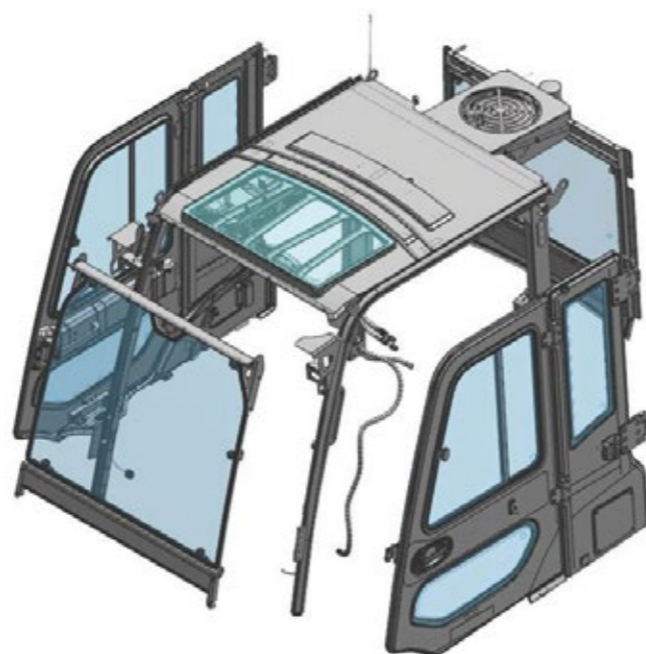
The mast, carriage, and head guard are designed to provide the operator with **maximum visibility** for improved efficiency and **peace of mind** while working.

A **premium quality Grammer** seat is installed as standard, ensuring a comfortable driving position all day, even in rough working conditions.

The **spacious full floating cabin** with air conditioning and/or heater is available as:

- Partial cabin
- 1-door or 2-door (split type) version

Several air-ducts, like the windshield defrosting air duct, are integrated in the headliner for perfect air-distribution inside the cabin for more comfort.



LED lights OPTION



The LED lights offer the optimal visibility under any conditions.

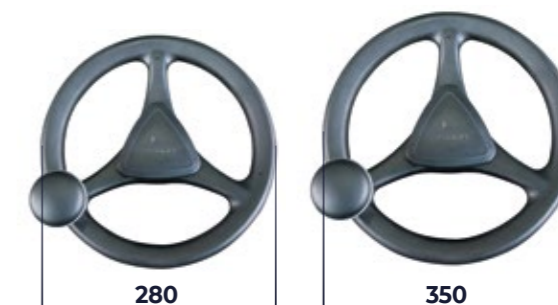


Reduced steering wheel size NEW

The **steering wheel diameter** has been reduced by 70mm to **minimise driver fatigue** and a Danfoss 4th generation Orbitrol steering unit **reduces noise while improving rotation**.

Effect:

1. Reduced radius of rotation
2. Increased driver steering convenience



Adjustable steering column

The steering column is very easy to adjust by using a simple hand grip. It allows the driver to find his most comfortable position.

Operator Comfort

TECHNOLOGY AT YOUR FINGERTIPS FOR FULL CONTROL

The enhanced cluster makes it easier to manage and control all key functions. For best-in-class operating sensitivity, these Stage V forklifts can be further equipped with fingertip control, allowing optimal usage and thus improving productivity.

Enhanced control cluster **NEW**

The enhanced instrument cluster makes it easier to manage the machine set-up, diagnostics and maintenance. All **settings can be entered directly into the cluster**, eliminating the need for an external computer.

- Key monitoring functions: OPSS, DPF control, maintenance, clock, service hour meter, fuel, temperature, driving direction and transmission level.
- Configuration and diagnosis: maximum driving speed, maintenance management, engine diagnosis, passcode setting.
- Additional functions (option): rear view camera, load indicator, auto-tilting levelling.

The above functions are available in 13 languages via the cluster.



"The cabin is incredibly comfortable – everything is easy to reach, I have full control and I don't feel tired at all at the end of the day. The fingertip control is optional, but, honestly speaking, every customer should take it – so easy, precise and fully programmable."

Fine-tuned fingertip control for faster response **OPTION**



To ensure **top-class fingertip control**, Hyundai is partnered with **Buchholz**

- The working speed of all functions is programmable in the cluster
- The response time (within 0.1 s) and fine-tuning capability of fingertip control are improved, thanks to a high-end system
- The directional switch is integrated into the fingertip console for more comfort.

Better operating sensitivity



- The manual levers are in perfect reach for the driver, next to the driver's seat.
- The directional switch is integrated into the lift/lower lever for perfect ergonomics.
- The new Buchholz MCV offers a better controllability and a higher working speed which increases productivity.

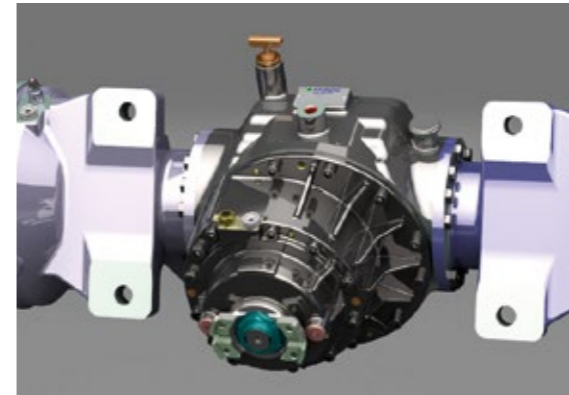
Safety

CREATING A SAFER WORKING ENVIRONMENT

Small details can make a huge difference when it comes to safety and security, like the optional **Seat-belt Interlock system**. This new feature protects the driver by blocking all of the functions until the seat-belt has been fastened. All of these features will help you to create a safe working environment and the highest productivity possible.

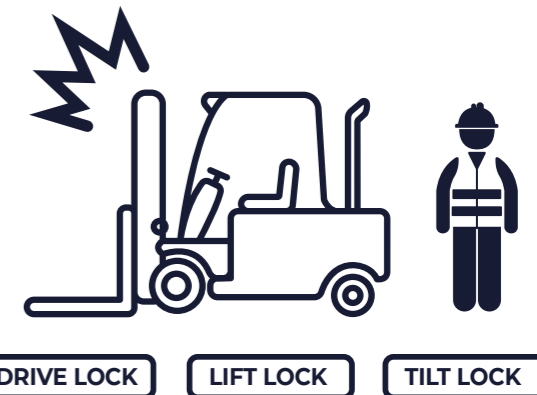


Auto parking brake and hill start assist



The parking brake operates automatically when the power is disengaged in order to prevent accidents caused by human error. Hill Start Assist Control (HAC) prevents backsliding when restarting on a slope.

OPSS (Driver Presence Sensing System)



The OPSS System restricts driving, lifting and tilting, and it kicks in **automatically when the driver leaves the seat** to prevent accidents. It operates in conjunction with the auto parking brake to contribute to a safer workplace.

Machine position warning



While driving the machine-control-unit (MCU) senses longitudinal and lateral movement and **alerts the driver if the preset stability values are exceeded.**

Rear view camera OPTION



The rear view camera is integrated in the cluster and can be **activated using a button or automatically while driving backwards.**

Passcode-protected start-up

Drivers can restrict equipment operation by setting a passcode. This **prevents theft or accidents** that could occur due to unauthorised use of the machine.

Serviceability

BUILT FOR QUICK, EASY SERVICING

The peace of mind that comes with fast, low-effort servicing is also part of the Hyundai 9VB/VC Series philosophy. These forklifts are designed to make maintenance as convenient as possible. All components and materials have been optimised to ensure a long, trouble-free service life.



Easy maintenance

The wide opening angle of the engine hood in combination with tool-less removable panels **reduces equipment downtime** by providing easy access to parts requiring regular maintenance.

Engine diagnostics and service scheduling

✕ Maintenance	
Engine Failure History	▶
Maintenance Management	▶
Signal Status	▶
User Password Change	▶

✕ Maintenance Management				
Item	Interval	Elapse	Count	Alarm
Axle Gear Oil	100	105	0	●
Transmissing Oil	100	105	0	●
Filter	100	105	0	●
Tank Air Breathe...	250	105	0	●
Engine Oil	500	105	0	●
Element	500	105	0	●

Engine failure can be checked in the cluster with **no need for a separate engine diagnostic tool**. Replacement timing for consumable parts is set in the cluster and informs the driver on the screen from 30h before the scheduled maintenance service.

Detachable radiator cover



The radiator can be accessed by a removable top cover to **reduce the downtime when checking and refilling the coolant or cleaning the radiator**.

Easy inspection of after-treatment device



For greater convenience, the counterweight opening has been made as large as possible. This **eliminates the need to remove the counterweight** for inspection or exchange of the after-treatment device.

Convenient after-treatment device

The automatic DPF regeneration function is supported by a hydraulic device that maintains the exhaust gas temperature in order to ensure the function of the DPF.

Water and dustproof fuse and relay box



All fuses and relays are centralised in three boxes with **enhanced waterproof and dustproof protection IP65**. The boxes themselves are located under the engine hood for **quick access**.

Parts & Warranties

HYUNDAI GENUINE PARTS AND WARRANTIES: THE BEST WAY TO PROTECT YOUR INVESTMENT

Hyundai Genuine parts, accessories and warranty programmes are specially designed to keep your investment covered. They increase uptime and maintain the performance, comfort, and convenience that are built into your equipment.



Leader in standard warranties for Stage V forklifts!

Hyundai warranties are designed to give you the cover you need to build your business with confidence and peace of mind.

Best standard warranties in the industry

For extra reassurance, and to ensure maximum customer confidence, we are supplying all new stage V models with best industry standard warranties.

The **powertrain standard warranty** has been extended by **33%**, from **3,000 to 4,000 hours**.*

The forklift **standard warranty** covers you for **two years or 3,000 hours, whichever comes first**.

Powertrain standard warranty
33% ↑



Forklift standard warranty*
2 years
*or 3,000 hours, whichever comes first.

Optional and extended warranty periods

In addition to this standard coverage, optional and extended warranty periods are available, allowing you to benefit from full warranty coverage for longer, and even over the full service life of your forklift.*

Hyundai Genuine parts

Hyundai Genuine parts have the same design as those installed when your machine left the factory. They are subjected to rigorous quality inspections and tests to make sure they meet Hyundai's

strict requirements for quality and durability. As well as minimising downtime, this helps to ensure peak performance on every task. In the 13,000 m² warehouse, **Hyundai covers over 96% of all Genuine Parts**. With one of Europe's most advanced automated warehousing systems, we are able to maintain availability and efficient delivery of all our Genuine Parts.

A network you can rely on

HCEE prioritises quick, reliable intervention to keep your equipment running reliably. Thanks to the **extended dealer network across Europe, we will always be closeby to ensure a timely and efficient solution**. Moreover, we guarantee a 24-hour delivery service across our European dealer network.

*Conditions apply. Please discuss the optimal solution for your needs with your dealer.

Specifications

35/40/45D - 50DN-9VB

						Hyundai	Hyundai	Hyundai	Hyundai		
Distinguishing marks	1.1	Manufacturer				Hyundai	Hyundai	Hyundai	Hyundai		
	1.2	Manufacturer's Model Designation				35D-9VB	40D-9VB	45D-9VB	50DN-9VB		
	1.3	Drive				Diesel	Diesel	Diesel	Diesel		
	1.4	Type Of Operation				Seated	Seated	Seated	Seated		
Weights	1.5	Load Capacity	C	kg	3,500	4,000	4,500	4,990			
	1.6	Load Centre Distance	x	mm	600	600	600	600			
	1.8	Load Distance (Centre of Drive Axle to Fork)	y	mm	561	561	561	576			
Tyres/Chassis	1.9	Wheelbase			mm	2,030	2,030	2,100	2,100		
	2.1	Service Weight			kg	5,851	6,405	6,860	7,264		
Dimensions	2.2	Axle Loading, Loaded	Front / Rear			kg	8,202 / 1,149	9,109 / 1,296	9,906 / 1,454	10,749 / 1,515	
	2.3	Axle Loading, Unloaded	Front / Rear			kg	2,700 / 3,151	2,822 / 3,584	2,919 / 3,942	2,949 / 4,315	
	3.1	Tyres				Pneumatic	Pneumatic	Pneumatic	Pneumatic		
	3.2	Tyre Size	Front				8.25-15-14PR	7.50-16-12PR	7.50-16-12PR	7.50-16-12PR	
	3.3	Tyre Size	Rear				7.00-12-14PR	7.00-12-14PR	7.00-12-14PR	7.00-12-14PR	
	3.5	Number of Wheels (x = Driven Wheels)	Front / Rear				2 x 2	2 x 2	2 x 2	2 x 2	
	3.6	Tread	Front			mm	1,132	1,282	1,282	1,282	
Performance data	3.7	Tread			mm	1,140	1,140	1,140	1,140		
	4.1	Tilt of Mast / Fork Carriage Forward / Backward	α / β		degree		8 / 10	8 / 10	8 / 10	8 / 10	
	4.2	Height, Mast Lowered			h1	mm	2,235	2,220	2,220	2,220	
	4.3	Free Lift			h2	mm	120	120	120	120	
	4.4	Lift Height			h3	mm	3,020	3,020	3,020	2,930	
	4.5	Height, Mast Extended			h4	mm	4,234	4,234	4,234	4,147	
	4.7	Height of	Overhead Guard			h5	mm	2,350	2,340	2,340	2,340
	4.8		Cabin			h5	mm	2,360	2,350	2,350	2,350
	4.8	Seat Height / Stand Height Rel. to SIP			h7	mm	1,316	1,304	1,304	1,304	
	4.12	Coupling Height			h10	mm	372	372	360	360	
	4.19	Overall Length			l1	mm	4,219	4,284	4,504	4,547	
	4.20	Length to Face of Forks			l2	mm	3,149	3,204	3,284	3,347	
	4.21	Overall Width (Double tyre)			b1	mm	1,370 (1,746)	1,418 (1,746)	1,418 (1,746)	1,418 (1,746)	
	4.22	Fork Dimensions			l x e x s	mm	50 x 122 x 1070	50 x 150 x 1070	50 x 150 x 1220	60 x 150 x 1200	
	4.23	Fork Carriage ISO 2328, Class / Type A, B					III / A	III / A	III / A	III / A	
4.24	Fork-Carriage Width (Double tyre)			b3	mm	1,300 (1,600)	1,300 (1,600)	1,300 (1,600)	1,300 (1,600)		
4.31	Ground Clearance, Below Mast, Loaded			m1	mm	170	155	155	155		
4.32	Ground Clearance, Centre of Wheelbase			m2	mm	202	202	190	190		
Additional data	4.34.1	Aisle Width For Pallets 1000 X 1200 Crossways			Ast	mm	4,656	4,705	4,799	4,857	
	4.34.2	Aisle Width For Pallets 800 X 1200 Lengthways			Ast	mm	4,856	4,905	4,999	5,057	
	4.35	Turning Radius			Wa	mm	2,895	2,944	3,038	3,081	
	4.36	Smallest Pivot Point Distance				mm	1,023	1,023	1,074	1,074	
	5.1	Travel Speed	Loaded / Unloaded			km/h	26.8 / 29.2	26.5 / 28.4	26.1 / 28.2	25.8 / 28.1	
	5.2	Lift Speed	Loaded / Unloaded			mm/s	520 / 540	510 / 540	510 / 540	410 / 460	
Engine	5.3	Lowering Speed	Loaded / Unloaded			mm/s	550 / 550	550 / 550	550 / 550	500 / 550	
	5.6	Max. Drawbar Pull	Loaded / Unloaded			N	41,432 / 39,409	41,382 / 40,430	41,405 / 40,346	41,460 / 40,256	
	5.8	Max. Gradeability	Loaded / Unloaded			%	44.5 / 25.1	39.2 / 24.1	35.4 / 23.4	32.6 / 22.3	
	5.10	Service Brake					Hydraulic	Hydraulic	Hydraulic	Hydraulic	
	7.1	Engine Manufacturer / Type					HMC D4CC	HMC D4CC	HMC D4CC	HMC D4CC	
Additional data	7.2	Engine Power Acc. to ISO 1585		kW / rpm (hp / rpm)		54.4 / 2,200 (73.2 / 2,200)	54.4 / 2,200 (73.2 / 2,200)	54.4 / 2,200 (73.2 / 2,200)	54.4 / 2,200 (73.2 / 2,200)		
	7.3	Maximum Torque		kgf-m / rpm (lbf-ft / rpm)		34.5 / 1,500 (248 / 1,500)	34.5 / 1,500 (248 / 1,500)	34.5 / 1,500 (248 / 1,500)	34.5 / 1,500 (248 / 1,500)		
	7.4	No. of Cylinders / Displacement		EA / cc		4 / 2,891	4 / 2,891	4 / 2,891	4 / 2,891		
	7.5	Fuel Consumption Acc. to Vdi Cycle		l / h		3.5	3.8	4.0	4.4		
	8.1	Type of Drive Control			AC		Power Shift	Power Shift	Power Shift	Power Shift	
Additional data	8.2	Operating Pressure, System / Attachments			bar	210 / 140	210 / 140	210 / 140	210 / 140		
	8.3	Oil Volume For Attachments			LPM (GPM-US)	60	60	60	60		
	8.5	Trailer Coupling, Type Din				PIN	PIN	PIN	PIN		

* The above specifications are based on V300 mast.

* In accordance with guideline 2198, this specification sheet provides details of the standard truck only. Non-standard tyres, different masts, optional equipment, etc., may result in different values.

Specifications

40/45D - 50DN-9VC

						Hyundai	Hyundai	Hyundai	
Distinguishing marks	1.1	Manufacturer				Hyundai	Hyundai	Hyundai	
	1.2	Manufacturer's Model Designation				40D-9VC	45D-9VC	50DN-9VC	
	1.3	Drive				Diesel	Diesel	Diesel	
	1.4	Type Of Operation				Seated	Seated	Seated	
Weights	1.5	Load Capacity	C	kg	4,000	4,500	4,990		
	1.6	Load Centre Distance	x	mm	500	500	500		
	1.8	Load Distance (Centre of Drive Axle to Fork)	y	mm	561	561	561		
Tyres/Chassis	1.9	Wheelbase			mm	2,030	2,030	2,100	
	2.1	Service Weight			kg	5,851	6,405	6,860	
Dimensions	2.2	Axle Loading, Loaded	Front / Rear			kg	8,988 / 863	9,895 / 1,010	10,667 / 1,183
	2.3	Axle Loading, Unloaded	Front / Rear			kg	2,700 / 3,151	2,822 / 3,584	2,919 / 3,942
	3.1	Tyres				Pneumatic	Pneumatic	Pneumatic	
	3.2	Tyre Size	Front				8.25-15-14PR	7.50-16-12PR	7.50-16-12PR
	3.3	Tyre Size	Rear				7.00-12-14PR	7.00-12-14PR	7.00-12-14PR
	3.5	Number of Wheels (x = Driven Wheels)	Front / Rear				2 x 2	2 x 2	2 x 2
	3.6	Tread	Front			mm	1,132	1,282	1,282
Performance data	3.7	Tread			mm	1,140	1,140	1,140	
	4.1	Tilt of Mast / Fork Carriage Forward / Backward	α / β		degree		8 / 10	8 / 10	8 / 10
	4.2	Height, Mast Lowered			h1	mm	2,235	2,220	2,220
	4.3	Free Lift			h2	mm	120	120	120
	4.4	Lift Height			h3	mm	3,020	3,020	3,020
	4.5	Height, Mast Extended			h4	mm	4,234	4,234	4,234
	4.7	Height of Overhead Guard (Cabin)			h5	mm	2,350	2,340	2,340
	4.8	Seat Height / Stand Height Rel. to SIP			h7	mm	1,316	1,304	1,304
	4.12	Coupling Height			h10	mm	372	372	360
	4.19	Overall Length			l1	mm	4,219	4,284	4,504
	4.20	Length to Face of Forks			l2	mm	3,149	3,204	3,284
	4.21	Overall Width (Double tyre)			b1	mm	1,370 (1,746)	1,418 (1,746)	1,418 (1,746)
	4.22	Fork Dimensions			l x e x s	mm	50 x 122 x 1,070	50 x 150 x 1,070	50 x 150 x 1,220
	4.23	Fork Carriage ISO 2328, Class / Type A, B					III / A	III / A	III / A
	4.24	Fork-Carriage Width (Double tyre)			b3	mm	1,300 (1,600)	1,300 (1,600)	1,300 (1,600)
4.31	Ground Clearance, Below Mast, Loaded			m1	mm	170	155	155	
4.32	Ground Clearance, Centre of Wheelbase			m2	mm	202	202	190	
Additional data	4.34.1	Aisle Width For Pallets 1000 X 1200 Crossways			Ast	mm	4,656	4,705	4,799
	4.34.2	Aisle Width For Pallet 800 X 1200 Lengthways			Ast	mm	4,856	4,905	4,999
	4.35	Turning Radius			Wa	mm	2,895	2,944	3,038
	4.36	Smallest Pivot Point Distance				mm	1,023	1,023	1,074
	5.1	Travel Speed	Loaded / Unloaded			km/h (mph)	26.4 / 29.2	26.2 / 28.4	25.9 / 28.2
	5.2	Lift Speed	Loaded / Unloaded			mm/s (ft/min)	510 / 540	510 / 540	480 / 540
Engine	5.3	Lowering Speed	Loaded / Unloaded			mm/s (ft/min)	550 / 550	550 / 550	550 / 550
	5.6	Max. Drawbar Pull	Loaded / Unloaded			N (lb)	41,751 / 39,407	41,506 / 40,430	41,536 / 40,346
	5.8	Max. Gradeability	Loaded / Unloaded			%	42.2 / 25.1	37.2 / 24.1	33.9 / 23.4
	5.10	Service Brake					Hydraulic	Hydraulic	Hydraulic
	7.1	Engine Manufacturer / Type					HMC D4CC	HMC D4CC	HMC D4CC
Additional data	7.2	Engine Power Acc. to ISO 1585		kW / rpm (hp / rpm)		54.4 / 2,200 (73.2 / 2,200)	54.4 / 2,200 (73.2 / 2,200)	54.4 / 2,200 (73.2 / 2,200)	
	7.3	Maximum Torque		kgf-m / rpm (lbf-ft / rpm)		34.5 / 1,500 (248 / 1,500)	34.5 / 1,500 (248 / 1,500)	34.5 / 1,500 (248 / 1,500)	
	7.4	No. of Cylinders / Displacement		EA / cc		4 / 2,891	4 / 2,891	4 / 2,891	
	7.5	Fuel Consumption Acc. to Vdi Cycle		l / h		3.5	3.8	4.0	
	8.1	Type of Drive Control			AC		Power Shift	Power Shift	Power Shift
Additional data	8.2	Operating Pressure, System / Attachments			bar	210 / 140	210 / 140	210 / 140	
	8.3	Oil Volume For Attachments			LPM	60	60	60	
	8.5	Trailer Coupling, Type Din				PIN	PIN	PIN	

* The above specifications are based on V300 mast.

* In accordance with guideline 2198, this specification sheet provides details of the standard truck only. Non-standard tyres, different masts, optional equipment, etc., may result in different values.

STANDARD AND OPTIONS

	Part	Description	40D-9VC 35D-9VB	45D-9VC 40D-9VB	50DN-9VC 45D-9VB	50DN-9VB
Operation room	OHG	Overhead Guard *40D-9VC, 35D-9VB: 2,350mm / 45D-9VC, 50DN-9VC, 40/45D-9VB, 50DN-9VB: 2,340mm	●	●	●	●
		Overhead guard with Rain Cover *40D-9VC, 35D-9VB: 2,360mm / 45D-9VC, 50DN-9VC, 40/45D-9VB, 50DN-9VB: 2,350mm	○	○	○	○
		Low Overhead guard with Rain Cover *40D-9VC, 35D-9VB: 2,230mm / 45D-9VC, 50DN-9VC, 40/45D-9VB, 50DN-9VB: 2,220mm	○	○	○	○
	Cabin	Cabin Options - One door, Two door	○	○	○	○
		Partial Cabin - Front glass with Wiper, Rear glass & Top Rain Cover	○	○	○	○
	A/C	Air Conditioner and/or Heater	○	○	○	○
	Seat	The air conditioning system contains fluorinated greenhouse gas refrigerant R134a. (Global Warming Potential: 1,430) The system contains 0.55 kg refrigerant representing a CO ₂ equivalent of 0.787 metric tonnes.	○	○	○	○
		Full Suspension Synthetic leather Seat + Orange Belt, Seat Switch	●	●	●	●
	Lever	Additional options for Full Suspension Seat - Arm Rest, Back Rest, Belt Switch, Heat	○	○	○	○
		Lever - Manual	●	●	●	●
Ect.	Lever - Fingertip	○	○	○	○	
	Radio & USB	○	○	○	○	
Mast & attachment	Mast	Rear Horn Grip	○	○	○	○
		2 Stage mast - Standard (V)	●	●	●	●
		2 Stage mast - Single full free (VF)	○	○	○	○
	Fork	3 Stage mast - Single full free (TF), Dual full free(TS)	○	○	○	○
		1,220mm Fork for 40/45D-9VC, 50DN-9VC, 35/40/45D-9VB, 1,200mm Fork for 50DN-9VB	●	●	●	●
	Carriage	Fork Options - 900mm~2,300mm	○	○	○	○
		Carriage - Narrow (1,300mm / Hook)	●	●	●	●
	Attachment	Carriage options	-	-	○	○
		Class IV Wide (1,600mm / Hook)	○	○	○	○
	Hydraulics	Hook-on Side Shift	○	○	○	○
Fork Positioner& Side-shift		○	○	○	○	
Tyres	3 Spool MCV + attached piping for V330 mast	●	●	●	●	
	MCV & Hoses	○	○	○	○	
Visibility	Lamp	MCV Options - 4 Spool (only for manual lever)	○	○	○	○
		MCV Options - 5 Spool (only for manual lever)	○	○	○	○
	Mirror	Attached Piping for All MCVs & Masts	○	○	○	○
		Mirror - Panorama	●	●	●	●
Others	Camera	Mirror Options - L/H & R/H Back Mirror, Outside Mirror	○	○	○	○
		Rear view Camera only	○	○	○	○
Convenience	Safety	Knob-Switch with Direction & Horn	●	●	●	●
		Auto Tilt levelling (Manual lever)	○	○	○	○
Safety	Others	Load Indicator	○	○	○	○
		Hydraulic Pressure on Display	●	●	●	●
Others	Safety	OPSS - Travel & Mast	●	●	●	●
		Master Switch to cut off electricity from battery	●	●	●	●
Others	Safety	Hazard Switch	○	○	○	○
		Plastic Side Cover	●	●	●	●
Others	Safety	Steel Side Cover	○	○	○	○
		Recycling Option (Under Cover & Rear tyre cover)	○	○	○	○
Others	Safety	Fuel Cap with Key	●	●	●	●
		Hydraulic Oil - ISO VG46 (Hyundai genuine long life hydraulic oil)	●	●	●	●
Others	Safety	Hydraulic Oil Options - ISO VG68 for Tropical, ISO VG32 Cold Area (Hyundai genuine long life hydraulic oil) ISO VG15 Cold Area (Conventional hydraulic oil)	○	○	○	○
		Accumulator - Mast damping	○	○	○	○

● : STD / ○ : OPT





*Standard and optional equipment may vary by country. Contact your Hyundai dealer for more information. *The machine may vary according to International standards. European specifications may differ from Korean specifications mentioned in the brochures. *The photos may include attachments and optional equipment that are not available in your area. *Materials and specifications are subject to change without advance notice. *All imperial measurements are rounded off to the nearest pound or inch.

Hyundai Construction Equipment Europe NV
Hyundailaan 4, 3980 Tessenderlo, Belgium
Tel: (+32) 14-56-2200 Fax: (+32) 14-59-3405

Contact your Hyundai dealer.
hyundai-mh.eu

Address